



# Quakertown

## QUARTERLY

*The Heart of Upper Bucks County. A Great Place to Live, Work and Play!*

Volume 4

Spring 2011 Newsletter

### QUAKERTOWN STREETSCAPES PROJECT BREAKS GROUND!

After nearly ten years of waiting, the **Quakertown Streetscapes** project to beautify the downtown area is set to begin this spring. Borough Council recently signed off on about \$960,000 in state grant money to fund the project in conjunction with PennDOT and Quakertown Alive! Streetscape improvements will target Broad Street between Fifth Street and Hellertown Avenue. It's designed to make the downtown more attractive and welcoming.

Plans have been reviewed and bids have been awarded for the first phase, which will cost \$532,000. This includes renovations to the downtown Triangle Park, new signs and electrical preparation for the installation of old-fashioned streetlights (the style based on a 1900's wrought iron gaslight). Illuminated flagpoles will display flags of the United States, Pennsylvania and Quakertown Borough.

As part of the project, **Triangle Park** in the center of town will be redesigned. New benches, a fountain with a decorative gateway wall and landscaping, including new trees and native shrubs, installing brick crosswalks, and a new Quakertown sign, will be done in the apex of the triangle, rounding out the construction project.

Using both borough equipment and labor will help keep the cost down for electrical work and some of the demolition and installations.

**Phase 1 must be completed by November 17, 2011.** This is just part of the nearly \$1 million streetscape project along Broad Street. But the start of the project is good news for borough officials and residents, who have waited years for this project to get off the ground.

The cost of the second phase, which includes new crosswalks, more lighting and handicapped ramps, is undetermined at this time. Gilmore & Associates of New Britain is the project's third-party inspector.



Quakertown Borough • Quakertown  
 ertown Borough • Quakertown Borough  
 Borough • Quakertown Borough • Quakertown  
 ough • Quakertown Borough • Quakertown  
 • Quakertown Borough • Quakertown  
 Quakertown Borough • Quakertown  
 ertown Borough • Quakertown Borough  
 Borough • Quakertown Borough • Quakertown  
 ough • Quakertown Borough • Quakertown  
 • Quakertown Borough • Quakertown  
 Quakertown Borough • Quakertown  
 ertown Borough • Quakertown Borough  
 Borough • Quakertown Borough • Quakertown  
 ough • Quakertown Borough • Quakertown  
 • Quakertown Borough • Quakertown  
 Quakertown Borough • Quakertown

# INSIDE THE QUAKERTOWN

Borough Information .....	3	Concert in the Park Series.....	9
Dates to Remember.....	3	Open Burning and Recreational Fires .....	10
Utility Payment Address Change .....	3	Electric Tree Safety .....	11
2011 Pool Banner Art Contest.....	5	Medication Disposal .....	12
Tree Roots/Are You a Victim of the Root Ogre ....	6	Quakertown Community Pool.....	13
Water Leaks.....	7	Infrastructure .....	14
Quakertown Alive! Presents.....	8	K.I.D.S Program .....	15
Spring Leaf Pickup.....	8		



# BRICK'S GARDEN CENTER

- Flowers
- Pavers
- Shrubs
- Vegetables
- Swings
- Perennials
- Seasonal
- Hanging Baskets

(215) 536-7102 • Route 309, Quakertown



## Puzzled by retirement options?


Let us help you \_\_\_\_\_ put the pieces \_\_\_\_\_ together.

For 75 years, Rockhill Mennonite Community has been helping people discover the benefits of living within a continuing care retirement community. Call us today for more information and to discuss a lifestyle option which meets your needs and preferences. Contact Renee Patterson at 215.257.2751, ext 211 to schedule a personal tour.

### ROCKHILL MENNONITE COMMUNITY

— Celebrate the VISION —  
1935 - 2010

3250 State Road | Sellersville, PA 18960  
www.rockhillmennonite.org

267-371-4508 | phoebe.org/richland

May 25, 2011  
5:30 p.m.  
Refreshments & Silent Auction  
7 p.m.  
"What's it Worth?" Presentation

Steve Tobin Gallery  
530 California Road,  
Quakertown

## Antiques & Artisans

Join Phoebe Richland for a unique fundraising event featuring an evening of music, fine wines and gourmet delights woven throughout the impressive Steve Tobin Gallery. Following the opening reception, well-known antiques and art expert, Dr. Lori will answer "What's it Worth?" with an honest and humorous approach to the truth about family heirlooms, collectibles and yard sale finds brought by our attendees. All proceeds will benefit Phoebe Richland's Springhouse Park project.

Tickets: \$35/person  
For more information contact  
267-371-4508  
or kkiehstaller@phoebe.org.



**PHOEBE RICHLAND**  
*A tradition of excellence. A passion for caring.*

Phoebe Richland is a community of Phoebe Ministries, a not-for-profit organization dedicated to enhancing the lives of senior adults.



### Community Home Services

Providing high quality in-home care services.

- Registered Nurses
- Licensed Practical Nurses
- Nurse Aides
- Homemakers
- Companions
- Drivers
- Chaplain Services

We will work closely with you to ensure that you receive the care you need. Services are coordinated and supervised by a Registered Nurse 24-hours a day, 7 days a week including holidays, in the privacy of your home.

**Community Home Services | 781 Route 113 | Souderton, PA**  
**www.communityhomeservices.org | 215-723-1906 | 1-888-723-3570**




## Creative COLORGRAPHICS INCORPORATED

**THE SOURCE FOR ALL YOUR PRINTING NEEDS!**

Creative Color Graphics is proud to publish the Quakertown Borough Newsletter.

**2 CONVENIENT LOCATIONS!**

<p><b>Quakertown</b> 351 West Broad Street Quakertown, PA 18951 215-538-0350</p>	<p><b>New Hope</b> 20 Village Square, # 25 New Hope, PA 18938 215-862-2636</p>
--	--

**CALL TODAY FOR A FREE QUOTE!**



# Borough Hours and Phone Numbers

**Emergency - - Fire, Ambulance or Police dial 9-1-1**

- Borough Hall..... 215-536-5001
- Utility Billing ..... 267-347-5009
- Police Administration ..... 215-536-5002
- Police Non-Emergency Dispatch..... 215-795-2931
- Electric Department ..... 215-536-5003
- Wastewater Department ..... 215-536-5004
- Highway Department ..... 215-536-5005
- Water Department..... 215-536-5855
- Swimming Pool..... 215-536-5235
- "Kids" Program - Skating Shelter ..... 215-538-0331
- 24-hour Anonymous Crime Tip Line..... 267-371-5094
  
- Utility Emergency after hours ..... 215-721-3520

The Borough office is open Monday through Friday from 8:30 a.m. to 5:00 p.m. For your convenience, utility payments can be made at the drive through area located behind Borough Hall. When the office is closed, utility payments can be deposited in the side door of Borough Hall.

Borough Council's regular meeting is normally the first Wednesday of every month at 7:30 p.m. The work session meeting is usually the fourth Monday of the month at 7:30 p.m. All meetings are open to the public. Council Chambers is handicap accessible. If you want to confirm a meeting date, please check our website at [www.quakertown-pa.gov](http://www.quakertown-pa.gov).

Planning Commission Meeting is held the second Monday of each month at 7:30 p.m.

## UTILITY PAYMENT ADDRESS CHANGE

The Borough of Quakertown's contract with TD Bank for the collection and processing of utility payments expired on April 1, 2011. For the most efficient and accurate processing, your check should always be payable to the Borough of Quakertown and mailed with the payment coupon. Payments received at this address are processed the same day and applied to your utility account. It is very important that payments are mailed to the following address and not to the TD Bank lockbox to eliminate possible delinquency. It is very important to utilize the payment coupon when making your payment, as the coupon is encoded for efficient and accurate posting of payments.

Borough of Quakertown  
Utility Payment  
35 North Third Street  
Quakertown, PA 18951

## DATES TO REMEMBER

- April 22nd:** Good Friday Holiday  
Borough Hall Closed  
No Disruption of Trash Pick up
  
- April 30th:** Brush drop off 8:00 a.m. at sewer treatment plant
  
- May 7th:** Bike Rodeo 9:00 a.m. at the Quakertown Pool parking lot
  
- May 21st:** Arts Alive! 10:00 a.m. - 4:00 p.m. Downtown Quakertown
  
- May 28th:** Pool opens weekends at 12:00 Noon - 8:00 p.m.  
Brush drop off 8:00 a.m. at sewer treatment plant
  
- May 30th:** Memorial Day  
Monday and Tuesday trash routes will be picked up on Tuesday, May 31st. The rest of the week will be on schedule
  
- June 16th:** Pool opens full time.
  
- June 23rd-24th:** KIDS Program Registration 11:00 a.m - 1:00 p.m., 6:00 p.m. - 8:00 p.m.
  
- June 25th:** Brush drop off 8:00 a.m. at sewer treatment plant



# LifeQuest

When Caring Is A Matter Of Trust.

- Long-Term Residential
- Short-Term Residential
- Sub-Acute Nursing Care
- Child Day Care
- Before & After School Programs
- Kindergarten & Enrichment Programs
- Summer Camp
- Enhanced Adult Day Care
- At-Home Senior Personal Care Services

**Locations:**

Quakertown, East Greenville, Allentown, Trexlertown

For more information about how our LifeQuest family of services can help you or someone you love, call 215-536-6152 or 866-536-6277

[www.lq.org](http://www.lq.org)



**LifeQuest**

When Caring Is A Matter Of Trust.



## Wet Basement ... Again?

Don't worry about water damage or flooding every time it rains.  
*That's why we're here.*

### Healthy Homes Waterproofing

Call Us today! We'll keep the water out for good.

- ✓ Interior/Exterior Waterproofing
- ✓ Sump Pumps
- ✓ Battery Back-up Units
- ✓ Minor Repairs
- ✓ Wall and Crack Repair
- ✓ Yard Drainage Corrections



Healthy Homes Systems, Inc.  
waterproofing experts and so much more.

PA Lic# 020706 NJ Lic# 13VH04790200

Visit us at [fixmybasement.com](http://fixmybasement.com) or call us to set up an appointment. No long presentations, no scare tactics, just a dry basement and no worries during the next storm.

**215.453.1201** [FixMyBasement.com](http://FixMyBasement.com)



Hereford  
(215) 679-9570

Douglassville  
(610) 385-0365

Easton  
(610) 258-8844



Your source for quality sheds, garages, horse barns, gazebos, swing sets, and lawn furniture.

PROUDLY  
**COMMITTED**  
TO THE COMMUNITIES  
**WE SERVE.**



**BELIEVE IN LOCAL. CHOOSE**

**UNIVEST**

BANKING • INSURANCE • INVESTMENTS  
CELEBRATING 135 YEARS OF COMMUNITY BANKING  
[univest.net](http://univest.net) 877.723.5571

BANKING • INSURANCE • INVESTMENTS • MORTGAGES • TRUST SERVICES • WEALTH MANAGEMENT  
Univest National Bank and Trust Co. Member FDIC Equal Housing Lender

**Fall  
Registration**



**610-346-6386**

Web: [www.tinytotslc.com](http://www.tinytotslc.com)

Located 10 Minutes from Quakertown or Hellertown

### Tiny Tots Learning Center

[www.tinytotslc.com](http://www.tinytotslc.com)

6:30 am - 5:50 pm M-F  
Ages 8 months to 9 years

- Certified Trained Staff, CPR & First Aid
- 3 & 4-year-old Preschool
- Toddler classrooms
- Clean, Safe Environment
- Before- & After-School class-Special needs friendly
- Certified Teachers
- Early Learning Curriculum



Free Registration Coupon  
\$25.00 (value)  
valid through 9-31-11



FOR YOUTH DEVELOPMENT  
FOR HEALTHY LIVING  
FOR SOCIAL RESPONSIBILITY

Upper Bucks YMCA

401 Fairview Ave., Quakertown 215-536-YMCA(9622) [www.ubymca.org](http://www.ubymca.org)

### Aquatics

### Arts & Humanities

(In cooperation with the Katie Stauffer Memorial Arts and Cultural Center)

### School Age Child Care

### Summer Day Camp

### Gymnastics

### Sports

### Wellness



# 2011 POOL BANNER ART CONTEST

## General Guidelines

### OBJECTIVE

Are you a die-hard artist? Do you have lots of creative ideas and would like to showcase your work? It's time to show Quakertown just how talented you are! The Borough of Quakertown is looking for talented artists to create a tagline and graphics design for the Quakertown Community Pool over-street banner.

### CONTEST RULES

- The competition is open to Quakertown Borough Residents only.
- All designs must have an original tagline and graphics designed by the artist.
- The original art work must be submitted to the Community Coordinator at the Borough of Quakertown.
- The size of the entry, measured unframed, will be no larger than 11" x 14".
- Each artist may submit only one entry.
- Each artist must complete a release form with complete contact information--this is part of the registration process on line at [www.quakertown-pa.gov](http://www.quakertown-pa.gov).
- The winning design will be printed on a banner and displayed over Mill Street in front of the Community Pool for the duration of the pool season.
- Original Artwork will hang in the Borough of Quakertown's Council Chambers and cannot be returned to the artist. Additionally, all artwork will be displayed on the Borough of Quakertown's website at [www.quaketown-pa.gov](http://www.quaketown-pa.gov). Artists should, therefore, submit artwork they will not need for other purposes.
- Participants agree to allow the Borough of Quakertown to photograph their entry for display purposes and forfeit contest publicity.

### Accepted media for artwork are as follows:

- Paintings: oil, acrylics, watercolor, etc.
- Drawings: pastels, colored pencil, pencil, charcoal, ink, markers
- Mixed Media: use of more than two medias such as pencil, ink, watercolor, etc.
- Computer-Generated Art
- Photography

Each entry must be original in concept, design, and execution and may not violate any U.S. copyright laws. Any entry that has been copied from an existing photo (other than the student's own), painting, graphic, advertisement, or any other work produced by another person is a violation of the competition rules and will not be accepted. Work entered must be in the original medium (that is, not a scanned reproduction of a painting or drawing).

### IMPORTANT DATES

- All entries are due by noon on Friday, April 15, 2011.
- Judging will be held the weeks of April 18 – 29, 2011.
- Winner will be notified on Monday, May 2, 2011.
- Award will be presented at the May 4, 2011 Borough of Quakertown Regular Council Meeting.

## JUDGING CRITERIA

Entries will be reviewed by a panel of judges who will select the winner based on originality, content, quality, appeal and adherence to these contest rules, theme and guidelines.

## AWARD

The winner will receive 2 tickets to Dorney Park.

## CONTACT INFORMATION

Diana Gleockler, Community Coordinator  
[dgleockler@quakertown-pa.gov](mailto:dgleockler@quakertown-pa.gov)

### Borough of Quakertown 2011 Pool Banner Art Contest

#### Artist Information and Release Form

#### ARTIST INFORMATION

Name:		Grade :	
Street Address:			
City:	State:	Zip	
Email:	Home Phone:		

#### PARENT OR GUARDIAN INFORMATION (FOR ENTRANTS UNDER 18 YRS OF AGE)

Name(s):			
Street Address:			
City:	State:	Zip	
Email:	Home Phone:		
Work Phone:	Cell Phone:		

#### ART CONTEST ENTRY

Title of Entry:			
Medium:			
Description			
Dimensions:	Height:	Width:	Depth:

PLEASE PRINT CLEARLY. INCOMPLETE FORMS WILL NOT BE ACCEPTED.

#### ORIGINALITY CERTIFICATION

I hereby certify that, to the best of my knowledge, the art entry described above is an original work or authorship by the undersigned artist and that it is not copied from, nor does it include, any other person's copyrighted work.

#### ARTWORK RELEASE

We, the undersigned, represent that the art entry described above is an original work of authorship personally created by the undersigned artist to which the artist is entitled copyright protection. In consideration for the acceptance of the art entry by the Borough of Quakertown and intending to be legally bound hereby, the undersigned grant the Borough of Quakertown the right to publicly display the art entry, if it is selected for display, in accordance with the rules of the Art Contest. The undersigned acknowledge that the final decision regarding the suitability of an art entry will be made by a volunteer panel. The undersigned also grant the Borough of Quakertown the right to reproduce the art entry for any non-commercial purpose. The undersigned further grant the Borough of Quakertown from any and all liability for damage, loss, or misappropriation of the art entry during and subsequent to the Art Contest. The undersigned further agrees to indemnify, hold harmless and defend the Borough of Quakertown against any and all claims of any nature whatsoever, including, but not limited to, claims of copyright infringement, by any party whatsoever, arising out of or in any way related to the submission of the art entry in the Art Contest.

Artist Signature:
Parent/Guardian Signature (if under 18):

Insurance as  
unique as you.



19 E. Union St., Richlandtown / 215.529.7600 / brunnerinsurance.com

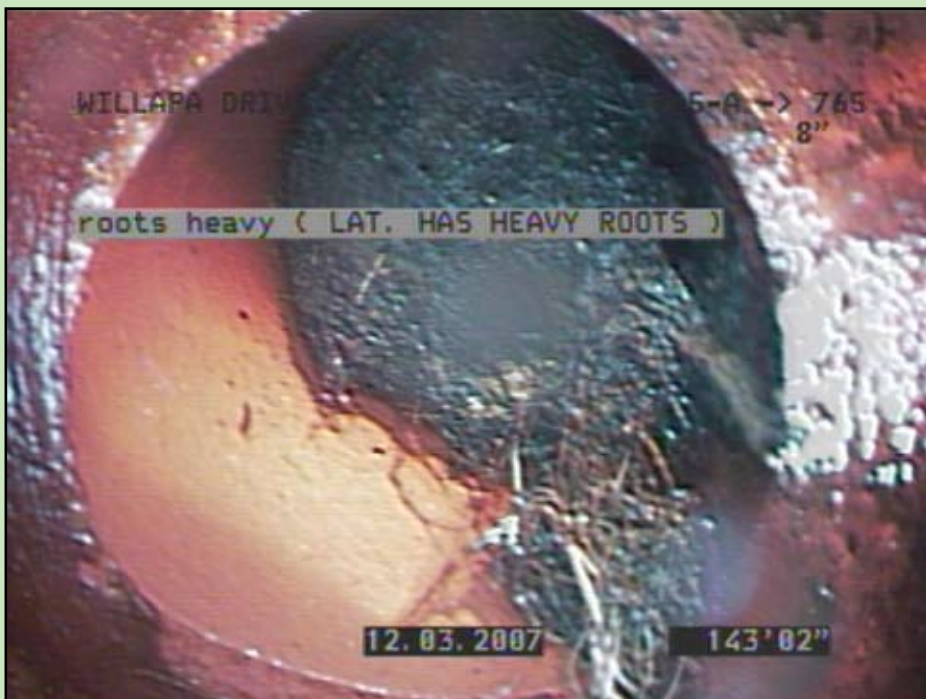
**ADVERTISE IN THE QUAKERTOWN QUARTERLY!**

**5500 NEWSLETTERS SENT OUT TO  
LOCAL QUAKERTOWN RESIDENTS**

<b>EIGHTH PAGE</b>	<b>\$200</b>
<b>QUARTER PAGE</b>	<b>\$350</b>
<b>HALF PAGE</b>	<b>\$575</b>
<b>FULL PAGE</b>	<b>\$1100</b>

**CALL KAREN ROWLAND TO RESERVE YOUR SPACE!  
267-281-3070**

**TREE ROOTS – ARE YOU A VICTIM OF THE ROOT OGRE?**



You are about to meet a villain that lives in the sewers in Quakertown, the Root Ogre. This ogre grabs the grease along with other debris and makes the clogs worse and results in **extreme pain in our wallets.**

Roots thrive in the warm, moist, nutrient-rich atmosphere above the water level inside sanitary sewers. The flow of warm water inside the sewer pipe causes water vapor to escape to the cold and/or dry soil surrounding the pipe. Tree roots are attracted to the water vapor leaving the pipe and they follow the vapor trail to the source of the moisture, which is usually from cracks or loose joints in the sewer pipe. Tree roots will penetrate the opening to reach the nutrients and moisture inside the pipe. This continues in winter even though trees appear to be dormant. Once inside the pipe, roots will continue to grow and if not disturbed, they will completely fill the pipe with many hairy root masses at each point of entry. The network of roots grows, forming a nasty ogre inside the pipe, trapping grease, tissue paper, and other debris discharged from the residence or business. Homeowners will notice the first signs of a slow flowing drainage system by hearing gurgling noises from toilet bowls or drains become slower when emptying their tubs. A complete blockage will occur if no remedial action is taken to remove the roots and resulting blockage.

As roots continue to grow, they exert considerable pressure at the crack or joint where they entered the pipe. The force exerted by the root growth can break the pipe and may result in total collapse of the pipe. Severe root intrusion and structurally damaged pipes will require replacement. Tree roots growing inside sewer pipes are generally the most expensive sewer maintenance item experienced by Borough residents. Roots from trees growing on private property throughout the Borough are responsible for many of the sanitary sewer backups and damaged sewer pipes. Homeowners should be aware of the location of their building sewer and refrain from planting trees, bushes, and hedges near the building sewers. You may want to consult tree experts and ask their advice. The replacement cost of a building sewer line as a result of damage from tree roots can be very expensive.

How can you determine if you are a likely victim of the Root Ogre? If your home was built before 1980, you may have clay or iron pipes. These pipes are more likely to have cracks or joint problems caused by ground settling or freeze/thaw cycles than PVC pipes. Look at your yard and walk above the area where your building sewer is located. Walk with a person on each side of you, holding hands with your arms stretched out wide. If anyone bumps into a tree or large bush before you get to the street or sewer main, you may be visited by the Root Ogre.

Other than removing the trees or replacing the building sewers with PVC pipe, there isn't any permanent solution. If the blockage is bad, the roots have to be cut and flushed away. The foam-type aquatic herbicide can be added a couple weeks later. The foaming herbicide fills the pipe, killing the roots on the top of the pipe as well as the sides. Annual use usually will keep them from returning. Please do not use any copper sulfate type root-killer. The copper crystals will only affect roots on the bottom of the pipe, and since roots are found in the top of the pipe, above the water level, only a tiny part of the root problem will be affected. Also, the copper will end up at the sewer treatment plant and may adversely affect the sludge treatment process, **costing the Borough and you more money.**

*If your plumber has to cut out roots from your building sewer, please call 215-536-5004 and let us know. We will send a crew to make sure that the roots the plumber cut out do not cause problems for your neighbors downstream.*



# WATER LEAKS

Each one of us should make our best efforts in the conservation of one of the most precious commodities here on our planet, which is water. One such effort is to watch out for water leaks in our homes, no matter how small those leaks might be.

Although some water leaks are so slow that they are not detectable, some known leaks are being ignored by some homeowners. This is due to ignorance to the fact that a small leak that keeps on leaking could add up to thousands of gallons in a year.

Moreover, water leaks not only contribute to worldwide water shortage, but also cause damage to some parts of the house's structure. Damages to the house structural elements could cause the house to deteriorate faster, collapse, and injure its occupants.

Water leak detection can either be done by periodically checking the areas and components of the house's plumbing system or by installing a commercially available water leak detection device.

There are mainly two types of water leak detection system:

1. **Passive Leak Detection Systems** are usually stand-alone battery-operated devices that produce alarm sound when its moisture sensor becomes wet, these alarms enable the homeowner to locate exactly where the water leaks are and do the necessary repairs. Since these are battery-dependent devices, its battery should be checked regularly.
2. **Active Leak Detection Systems** also sound an alarm when it detects water leaks, and will automatically stop the water flow. It may use a moisture sensor or a flow sensor in monitoring any water leaks. There are two types of active leak detection system:
  - a. Individual appliance systems monitor leaks from a single appliance and automatically shut off water supply to such appliance should leaks be detected.
  - b. Whole house systems monitor leaks in the whole house and shut off the main water supply to the house should leaks be detected. Whole house system is composed of several moisture sensors which send signal to control valve via radio signal or by means of wiring connections.

Every house is unique and has a special situation to determine what type of water leak system is applicable. Some simple systems may be installed by the homeowner, but complex systems should be done by a qualified plumber.

If you don't have a water leak detection system device installed in your house, you can always check your house periodically for any water leaks, unless of course if you already hear that water dripping sound. Water leaks usually happen in areas where the water-consuming

appliance and plumbing fixtures are located. Among the most obvious areas to look for water leaks are:

- Bathroom & toilet area (check for leaks on showerhead, faucet, and water heating system)
- Kitchen (check for leaks on faucet, dishwasher, water heating system)
- Laundry room (check for leaks on faucet, clothes washer)
- Garage and basement area (check on evaporator cooler, hot water system)
- Lawn (check on turf, low water use garden, irrigation system)
- Pool and spa
- Patio
- Water meter

Detecting water leaks through the sight and sound may seem an easy task. This may be true in fast and big leaks, but slow and small leaks, it could be impossible to detect without the aid of a water leak detection device. Here are some tips in monitoring the house for possible water leaks.

1. Water is leaking in your toilet when water is moving from the tank to the bowl when nobody is flushing it.
2. When your toilet is flushing itself.
3. Another method of detecting water leak in the toilet is to place food color in the tank, should you see the color in the bowl after a few minutes then you can conclude that there is a leak.
4. Since most water pipes are embedded in the walls and floors, we can only know if there are leaks when you see discoloration on wall, ceiling, and carpet.
5. Detecting water leaks in a sprinkling system is the same with spotting leaks on concealed piping systems.
6. One practical way to know whether you have water leaks in your house is to monitor your water meter. Make sure everything is turned off before you leave your home for work or when you are going to be gone for a few hours. Read your water meter. When you get home before you use any water, read the meter again. Should there be usage, you may have a leak in your home. If the leak is not easily detected, a plumber may be your best option. They have equipment to find leaks.

Water leaks only worsen through time; it would be wise for you to deal with it as early as possible. Early detection and repair shall save you money and prevent damage to your house. If you ignore it, you are only postponing something you should do anyway.



# QUAKERTOWN Alive!

## PRESENTS



The First Annual  
Quakertown Garden Tour  
Sunday, June 12th, 2011  
11 a.m. to 4 p.m.

Enjoy...

- Tranquil Asian Inspired Gardens
- Lush Water Features
- Unique Sculptures and Quaint Gazebos
- Sanguine Shade Gardens
- A secluded Pond with Blissful Swans in Residence
- A stroll among Native Plants, Grasses, Shrubs, and Trees
- An Abundance of Colorful Annuals and Perennials

Plus...

- Garden experts on hand to answer your questions
- Beverages and refreshments
- Garden-inspired surprises--including an opportunity to win great prizes in the Garden Affaires Raffle

Spend the day exploring the beautiful Private Spaces of the Showcase Gardens;

See why these Unique Outdoor Spaces bring joy to our homeowner/hosts.

Additional details and ticket information for this exciting Event will be available in mid April.

Contact Quakertown Alive!

[www.quakertownalive.com](http://www.quakertownalive.com), or email [GardenAffaires@gmail.com](mailto:GardenAffaires@gmail.com)

### Arts Alive!

Saturday, May 21st, 2011

10 a.m. to 4 p.m.

Downtown Quakertown

Free Live Entertainment All Day!

Free Parking

Over 100 juried artists and crafters

Kids' Activities and Rides

Carriage Rides

Food Vendors

Community Groups

And much more!



Rain or Shine (Rain location: Strayer Middle School,  
Ronald Reagan Drive, Quakertown)

## SPRING LEAF PICKUP

The Borough will conduct the Spring Leaf pickup beginning on Monday, April 4, 2011. We will collect leaves every Monday until the end of the month.

Please remember:

- Place leaves no more than 5 feet from the curbline.
- Do not pile leaves within 10 feet of any catch basin or within 20 feet of any intersection.
- Do not put sticks, stones, cans or other hard material in the pile. They will damage our leaf collecting equipment.

Foreign items mixed in the leaf piles will result in a non-pickup.

**VERY IMPORTANT!!!! TIE ALL BRANCHES AND BRUSH IN BUNDLES NO MORE THAN 4 FEET LONG AND WEIGHING NO MORE THAN 50 POUNDS. PLACE THE BUNDLES AT THE CURB ON YOUR TRASH PICKUP DAY.**

**DUE TO STATE REGULATIONS,  
WE CAN NO LONGER ACCEPT GRASS CLIPPINGS!**

Try these "green" alternatives for your grass clippings:

1. Leave the grass clippings as a natural fertilizer for your lawn. Studies show that you can reduce your total annual mowing time by 20-25% in this way!
2. Collect grass clippings and apply them to your vegetable garden as mulch.
3. Mix them directly into garden soil. This will increase drainage in heavy soils, while improving your water retention in sandy soils.

# DIMMIG

APPLIANCE • TV

*Always A Better Deal Since 1937*

117 W. Broad Street  
Quakertown, PA 18951

215-536-3700  
[www.dimmigs.com](http://www.dimmigs.com)





# Concert in the Park Series

The **Concert in the Park Series** will be upon us soon and we look forward to everyone joining us. There are many great bands slated to perform.

## Our upcoming concerts are:

July 10 – Philly Funk Authority

July 17 – The Mango Men

July 24 – Runa

July 31 – Shake, Rattle & Soul

August 7 – Daisy Jug Band

August 14 – Quakertown Band

Our concerts are held Sunday evenings from 6:30 p.m. to 8:30 p.m. in Memorial Park. In the event of inclement weather the is a rain date is Monday evening from 6:30 p.m. to 8:30 p.m.

We want to thank our sponsors who generously donated to make these events possible.

## SPONSORED BY:

FONZONE & ASHLEY

MERCURI & ASSOCIATES

**St Luke's**

ST. LUKE QUAKERTOWN HOSPITAL



COWAN ASSOCIATES, INC.



QUAKERTOWN NATIONAL BANK



DALLAS DATA SYSTEMS



BRACALENTE CONSTRUCTION



FIRST SAVINGS INSURANCE



CREATIVE COLOR GRAPHICS



CHES-MONT DISPOSAL



UNIVEST NATIONAL BANK





# OPEN BURNING AND RECREATIONAL FIRES

## Prohibition against Open Burning

Within the municipal limits of the Borough, no person shall kindle, set, start, ignite, maintain or permit the kindling, setting, starting, ignition or maintenance of any open burning outside of any building for any purpose at all, including by way of example and not by way of limitation any junk fire, refuse fire, open fire, a fire ignited to burn brush, grass, wood, leaves, paper, rubbish, garbage, construction materials, etc.

Open burning that will be offensive or objectionable due to smoke or odor emissions due to atmospheric conditions or local circumstances shall be prohibited. The Code Official or Fire Marshal is authorized to order the extinguishment of any open burning which creates or adds to a hazardous or objectionable situation. The Fire Marshal or Code Official may ban open burning within the Borough when atmospheric conditions result in the potential for wildfires that may spread from their source due to dry vegetative or plant conditions.

## Exceptions

The prohibition against open burning shall not apply to any fire started or ignited:

### A. For the purpose of instructing firefighting personnel.

- Burning will be allowed for the purpose of instruction or training firefighting personnel under the supervision of the fire chief or officer in charge. However, fire for firefighting training may not be used when atmospheric conditions would create a situation of offensive or objectionable smoke or odor on other premises.

### B. To prevent or abate a fire hazard.

### C. For the prevention and control of disease or pests.

### D. Solely for ceremonial purposes, such as a bonfire.

- A permit shall be obtained from the Borough Fire Marshal prior to kindling a fire to prevent or abate a fire hazard, for the prevention and control of disease or pests and for ceremonial purposes, such as a bonfire.
- When required by state or local law or regulations, open burning shall only be permitted with prior approval from the state or local air and water quality management authority, provided that all conditions specified are followed.
- The locations from above shall not be less than 50 feet from any structure, and provisions shall be made to prevent the fire from spreading to within 50 feet of any structure

### E. The outdoor cooking of food shall be permitted in or on an Underwriters Laboratory (UL) approved open flame cooking device, solely intended for the cooking of food, and in strict adherence with the manufacture's specifications and the 2006 International Fire Code.

- Units not approved by Underwriters Laboratory (UL) must be approved by the Borough Fire Marshal and used in strict adherence with manufacturers specifications and the 2006 International Fire Code.

### F. The use of patio wood burning units that are approved by the Underwriters Laboratory (UL) are approved for use under the following conditions:

- The patio wood burning unit is approved by the Underwriters Laboratory (UL).

- Under no circumstances shall trash, garbage, leaves, brush, branches or hazardous materials be used in the ignition of these devices: The burning of clean-wood only is permitted.
- The use of a patio wood burning unit is used in accordance with manufacturer's specifications and the 2006 International Fire Code.
- The patio wood burning unit while in use must be ignited, attended and extinguished by an adult (18 years or older). A minimum of one portable fire extinguisher or other approved on-site fire-extinguishing equipment such as a bucket of water or garden hose shall be available for immediate utilization.
- Units not approved by Underwriters Laboratory (UL) must be approved by the Borough Fire Marshal and used in strict adherence with manufacturers specifications and the 2006 International Fire Code.

### G. The use of a Masonry Home Built Units are approved for use under the following conditions:

- The Existing Masonry Home Built Unit has been inspected and approved by the Borough Fire Marshal.
- Under no circumstances shall trash, garbage, leaves, brush, branches or hazardous materials be used in the ignition of these devices: The burning of clean-wood only is permitted.
- The outdoor fireplace must be ignited, attended and extinguished by an adult (18 years or older). A minimum of one portable fire extinguisher or other approved on-site fire-extinguishing equipment such as a bucket of water or garden hose shall be available for immediate utilization.
- The owner of a New Masonry Home Built Unit shall obtain a permit from the Code Enforcement Office prior to any installation and the final installation shall be inspected by the Code Enforcement Official and only put into operation with written approval from the Borough's Code Enforcement Office. The purpose of the Code Enforcement Office inspection will only be to ensure compliance with this ordinance and shall not be considered a safety inspection.

### H. An outdoor wood-fired boiler may be installed and used in accordance with all of the following provisions:

- The outdoor wood-fired boiler shall not be used to burn refuse and shall be used to burn clean wood only.
- Shall be located at least 100 feet from the nearest residential dwelling which is not on the same property as the outdoor wood-fired boiler.
- Shall have a chimney that extends at least 15 feet above the ground surface or 3 feet above the building it serves, whichever is greater. In addition, the chimney shall extend 3 feet above the highest peak of any residence located within 500 feet from the wood-fired boiler. The Fire Marshal or designee may approve a lesser height on a case-by-case basis if, in the opinion of the Fire Marshal or designee, it is necessary to comply with manufacturer's recommendations and if a lower chimney height does not create a nuisance to neighbors.
- The owner of the outdoor wood-fired boiler shall obtain a permit from the Code Enforcement Office prior to any installation and the final installation shall be inspected by the Code Enforcement Official and only put into operation with written approval from the Borough's Code Enforcement Office. The purpose of the Code Enforcement Office inspection will only be to ensure compliance with this ordinance and shall not be considered a safety inspection.

# ELECTRIC TREE SAFETY

With spring coming, everyone will be going outside and working on their landscaping. Whether planting trees to celebrate National Arbor Day, provide a wind break, reduce carbon in the environment or to beautify your landscape, the Borough reminds everyone of the importance of planting tall-growing trees safely away from power lines. Seek help in choosing and placing trees and bushes that provide shade, color and screening that won't grow to interfere with the electric supply.

Trees that grow too close to electric lines can create shock and fire hazards as well as power outages. Parents and caregivers are urged to teach children never climb trees near power lines. Also never trim trees that are close to power lines – leave that to the professionals.

Trees provide many aesthetic, environmental and economic benefits, including energy-efficient shade and cooling during hot summer months, or natural windbreaks against winter winds. But we all need to remember the dangers and risks created when trees grow into power lines, and the importance of maintenance of trees near power lines.

Everyone needs to be aware of required utility line clearances and why these clearances are important to the safety and reliability of electrical service.

Before starting a landscaping project, take the time to research tree selections by consulting your local arborist or tree nursery. These experts can provide assistance in designing a beautiful, shade-filled yard with trees appropriate for each area of the landscape.

In addition, trees help combat the effects of pollution by absorbing carbon dioxide (CO<sub>2</sub>). When trees grow, they take energy from the sun and combine it with carbon from the air to photosynthesize. They remove carbon from the air and sequester or store it in their biomass, or the wood, and in the ground. This makes trees a natural "carbon sink" or, a living source of carbon reduction. Some trees are better suited for this task than others and, according to the U.S. Department of Energy (DOE), tree species that grow quickly and live long are ideal carbon sinks.

Choosing the right tree for the right place is crucial, especially when it comes to power lines. Trees and wood in general, conduct electricity and can create a safety hazard if grown close to electric lines. Power outages or momentary interruptions can occur when branches come into contact with overhead lines. Electrical arcing and sparking from a wire to a nearby branch also can cause fires.



But a greater concern is the safety risk when children climb trees near power lines. Accidental contact of electric wires with a tree limb or playing and trimming around the tree can be fatal.

If you have trees that appear to be growing into power lines, contact the Borough Electric Department at 215-536-5003. Never try to prune them yourself. Depending upon the location, the Electric Department can remove the problem areas or recommend skilled professionals trained to safely prune and trim trees for electric line clearance.

To avoid future electrical hazards, safe planting tips to remember include:

- Consider mature height of trees. Never plant a tree that could grow to 25 feet or more near a power line. Tall growing trees should be planted a minimum of 20 feet away from power lines, and 50 feet away to avoid future pruning. A mature height of less than 15 feet is recommended for trees planted near power lines.
- Do not plant near underground utility services. Tree roots can grow to interfere with underground pipes, cables and wires. Future repairs to these facilities also could damage the health and beauty of nearby plants and trees.
- Keep areas around electric meters, transformers or other electrical equipment free of any vegetation that could limit utility service access.
- Before digging, call PA One Call System to mark location of underground utilities so that accidental contact, damage and injuries can be avoided.

There are many beautiful varieties of trees, low-growing trees and shrubs that provide color, screening and shade, and enhance the quality of life in our communities and environment. Look at all types of trees that co-exist well with power lines and the environment to avoid the need for trimming for line clearance. As always consult a professional landscaper or arborist if you have any questions.

## COME JOIN US AT

KARAOKE - WEDNESDAY  
STARTS AT 9:30 PM

TRIVIA - THURSDAY  
STARTS AT 10:00 PM

NEW MENU!  
TONS OF DRINK SPECIALS!



(267) 373-9525

WWW.PRE-GAMESPORTSBAR.COM

1441 SOUTH WEST END BLVD. QUAKERTOWN, PA 18951

## Reading Headquarters for Upper Bucks County



New & Used Books • Special Order  
Book Searches • Buy & Trade  
Wide Variety • Personal Service

**10% OFF with this AD**  
302 W. Broad St. • Quakertown, PA  
215-529-1645

lionbooks@entermail.net

# MEDICATION DISPOSAL

Locally, 8 percent of our teenagers have admitted to illegally using prescription medications and about 70 percent of them have gotten the drugs from family medicine cabinets.

## Medications Impact the Environment

Prescription and over-the-counter medications are a source of pollution when they are flushed down the toilet or drain. Wastewater facilities and septic systems are not currently designed to process pharmaceutical products. Compounds passing through these systems can impact surface waters, groundwater, and drinking water supplies. Pharmaceuticals can also be released into waterways via stormwater run-off from fields applied with manure or biosolids.

## Concerns about Medicine Disposal

Medicines that are flushed down a toilet or sink contaminate water resources, resulting in reproductive and developmental problems in fish and other aquatic wildlife.

Improperly discarded containers provide personal information that can be used illegally, including identity theft.

There is the possibility of poisoning from accidental ingestion, particularly by small children and pets, if medicines are thrown "as is" in the trash or unneeded or expired medicines are kept in the house.

## Guidelines for Proper Disposal

**DO NOT DISPOSE OF MEDICATIONS DOWN THE TOILET!**

Remove ALL personal identification or prescription label from the container before placing in the drop bin in the reception area in Borough Hall.

Medications may be dropped off during normal business hours, Monday through Friday from 8:30 am to 5:00 pm.



## Rudy's Storage

160 Fairview Ave.  
Quakertown, PA 18951

Indoor &  
Outdoor  
Storage

call anytime: 267-228-7986  
reasonable rates for today's times!

**The Bucks Start Here**

**Money to Lend with Flexibility to Fulfill Your Dreams**

- Mortgages
- Home Equity Loans
- Home Equity Lines of Credit

**FIRST SAVINGS**  
Banking - Insurance - Investments

215-257-5035 [www.FirstSavingsOnline.com](http://www.FirstSavingsOnline.com)

# QUAKERTOWN COMMUNITY POOL

Complete the application and liability waiver (available online) and return them with your payment to 35 North Third Street, Quakertown. Beginning May 24, 2011 you can come to the pool at 601 W. Mill Street, from Noon to 7:00 p.m. to get your photo taken and receive your keytag. All members will receive their own keytag and must have their photo taken. Applications are also available for download at:

[www.quakertown-pa.gov](http://www.quakertown-pa.gov)



## NEW FOR THIS SEASON!

The Quakertown Community Pool will be offering free wireless connectivity for our guests. Bring your laptop, Kindle or other wireless device along for a nice day in the sun.



May 24th Noon-7:00 p.m.  
 May 25th, 26th, 27th  
 Noon - 4:00 p.m.  
 Quakertown Pool  
 Photo Shoot!

## BOROUGH of QUAKERTOWN

### Quakertown Community Pool Membership Application - 2011

#### To Be Completed By Applicant

Head of Household Name:		
Date of birth:	Home Phone:	Cell Phone:
Address:		
City:	State:	Zip:
Email:	Borough Resident: <input type="checkbox"/> Yes <input type="checkbox"/> No	<input type="checkbox"/> Own <input type="checkbox"/> Rent

#### Membership

First Name	Last Name	Date of Birth

#### 2011 Pool Fees

Membership Type	Early Application	Regular Application
Family – Resident	<input type="checkbox"/> \$175.00	<input type="checkbox"/> \$180.00
Family – NonResident	<input type="checkbox"/> \$255.00	<input type="checkbox"/> \$260.00
Adult – Resident	<input type="checkbox"/> \$ 75.00	<input type="checkbox"/> \$ 80.00
Adult – NonResident	<input type="checkbox"/> \$100.00	<input type="checkbox"/> \$110.00
Child (under 18) or Senior(over 62) Resident	<input type="checkbox"/> \$ 70.00	<input type="checkbox"/> \$ 70.00
Child (under 18) or Senior(over 62) Non- Resident	<input type="checkbox"/> \$ 85.00	<input type="checkbox"/> \$ 85.00

#### Important Information Regarding Your Pool Application

Proof of residence and ID of all family members must be shown before memberships are issued. Proof of full time student status must be included for college students.

Release of Liability Waiver must be signed to obtain pool membership.

Make your check payable to *Quakertown Borough*.

A family membership includes 2 Adult, all dependent children less than 18 and full time students to the age of 23, living at the same residence.

Only one membership registration is permitted per application form.

Keytags can be picked up at the Quakertown Community Pool starting May 24. Please see our website for times. All applicants must be present for ID photos to be taken.

Signature of Applicant:	Date:
-------------------------	-------

#### Verification

To be Completed by the Borough of Quakertown

Date Received:	Proof of Residency: <input type="checkbox"/> Utility Bill <input type="checkbox"/> PA Drivers License <input type="checkbox"/> Other
Authorization:	Date:

**A relationship  
that goes beyond the  
bank statement**

At National Penn, great relationships are business as usual. Whether you need a mortgage, loan, checking account or are concerned about ID theft, we're here to listen to your concerns and offer sound financial advice. It's all part of how we go beyond the expected for our customers.

Quakertown-Richland Community Office  
215.529.2917

Diane Rice, Manager  
604 N. West End Blvd.  
Quakertown, PA 18951

1.800.822.3321  
www.nationalpenn.com  
Member FDIC



*Experience the Difference*



Services & Ceremonies with Meaning & Value  
Traditional, Contemporary, Cremation & Memorial  
On-Site Crematorium, Your Loved One Remains in Our Care  
Secure Pre-planning & Pre-funding Programs  
Accommodations Designed for Families  
Fully Accessible for Persons with Disabilities



135 W. Pumping Station Rd.  
Quakertown, PA 18951  
215-536-3343

[www.janauglefcs.com](http://www.janauglefcs.com) \* [janauglefcs@verizon.net](mailto:janauglefcs@verizon.net)

**INFRASTRUCTURE**

Infrastructure – What is it, what does it mean? The infrastructure in the Borough consists of the roads, water system, sewer system, electrical system, etc. Our lives as we know them depend on a reliable, well maintained infrastructure to support our needs as a Borough and in the big picture, our nation. In this discussion we will only talk about the water infrastructure that the Borough owns and operates.

The Borough's water system and associated infrastructure was originally developed in the late 1800's. In the beginning, the Borough didn't own the system; it was privately owned and went by the name of the Quakertown Water Company. In the 1940's it was sold and became the Quakertown Water Authority, and a short time later became municipally owned by the Borough and continues as such to this day.

As our town grew, the water system was expanded to accommodate growth adding additional water wells and water mains to meet the additional demand. As the years progressed it became apparent that the water system needed some upgrading, so in the 1960's a large portion of the water mains, (approximately 30-35%), were replaced to provide better supply and fire fighting capability.

In the 1970's, the Federal Government passed the Safe Drinking Water Act. As the act was expanded and the regulations became more stringent, the Borough began a program in the mid 1980's to upgrade the water quality and water main replacements. This work continues even now. Periodically you will see the Water Department working in the Borough replacing a water main. Additionally, work is constantly being done to the wells and equipment that supply these water mains. This work mainly goes unnoticed because the wells and treatment facilities are scattered in and around the Borough. All of this is what makes up the water system infrastructure.

The Borough has spent millions of dollars over the years to upgrade and improve our system. It is a never ending process to keep pace with the systems' needs. While not perfect, the water system is in good shape, overall. With proper planning and funding, work will continue to be done to improve the Borough's water infrastructure well into the future. While not every aspect of the water system was discussed in this article, hopefully it will clarify the water system infrastructure.

**W/RIGHT**

PAVING, CONCRETE & EXCAVATING  
Residential - Commercial - Industrial  
PA021042



DRIVEWAYS • PARKING LOTS • SEAL COATING • LINE STRIPING  
PERSONALLY SERVING LOCAL COMMUNITY FOR 37 YEARS

For Free Estimates Call: 215-257-8711



## "K.I.D.S." 6-13 Youth Recreation Program

It's back...and it's better than ever! K.I.D.S. old and new are invited out to Memorial Park for a summer of smiles, laughs and good old fashioned fun. The K.I.D.S. Program (Kids Involved Doing Something) sponsored by the Borough of Quakertown, provides kids ages 6-13 with opportunities for cooperative play, crafts, arts and many assorted special events. The K.I.D.S. Program is scheduled for June 27 through August 5.

Sign up for the K.I.D.S. Program is on Thursday, June 23rd and Friday June 24th from 11:00 am to 1:00 pm and 6:00 pm to 8:00 pm. Signups are being held at the skating shelter at 50 N. Fourth Street, Quakertown.

Information and registration forms for this program are available at Borough Hall or available to download from our website, [www.quakertown-pa.gov](http://www.quakertown-pa.gov).

### The tentative schedule is:

- Monday, Wednesday, Friday: Ages 9 and up - 8:45 am to 11:45 am
- Tuesday, Thursday, Friday: Ages 6 – 8 am - 8:45 to 11:45 am
- Monday - REF: Ages 10 and up - 1:00 pm to 3:00 pm
- Wednesday - TOT: Ages 2 to 6 - 1:00 pm to 2:00 pm (with parents)

Family Night is every Tuesday from 6:00 pm and 9:00 pm, where children and parents are invited to the Memorial Park for a night of entertainment.

Evening Recreation Night is every Wednesday night from 6:00 pm to 9:00 pm, where new games and other fun are waiting for you.



Life doesn't have to be a pain in the knee...

...or neck, back, shoulder, elbow, hip, ankle...

Orthopaedics • Neurosurgery • Pain Medicine • Foot & Ankle Specialty Care • Pharmacy & Medical Equipment  
Physiatry • Physical Therapy • Rheumatology • Occumed Resources • Radiology

Trust your team at the St. Luke's Bone & Joint Institute to provide the most appropriate care for your knee condition.

The most comprehensive, coordinated care for orthopaedic, muscular and neurological conditions... right here in Quakertown.

For more information call 877-752-5448 and visit [www.slbji.org](http://www.slbji.org).

**St Luke's**  
Bone & Joint Institute

SPRING 2011



# Quakertown

## QUARTERLY

*The Heart of Upper Bucks County. A Great Place to Live, Work and Play!*



Spring 2011 Newsletter

PRST STD  
U.S. POSTAGE  
**PAID**  
Quakertown, PA  
PERMIT NO. 3

## Upper Bucks' Best Choice in Sight & Sound

- Convenient hours & Great Service  
-- FREE Hearing Tests, Cleanings, Adjustments
- "Open Ear" Fittings a Specialty
- High Technology, Low Prices

# Visionetics

*Optical & Hearing Aid Center*

- Our Area's Best Quality, Value & Service in Eye Care & Hearing Aids since 1974
- Great Eyeglass Selection
- Open Six Days a Week

89 S. West End Boulevard (Route 309) Quakertown • 215-536-0620

INVESTMENTS\*

ROTH CONVERSIONS\*



*Guiding You!  
Through the Rifts*

## DAVID D. BILGER, CPA

### 215-536-1040

[www.dbilgercpas.com](http://www.dbilgercpas.com)

IRS AUDIT REPRESENTATION

TAX & ACCOUNTING SERVICES

\*Securities offered through H.D. Vest Investment Services<sup>SM</sup>, Member SIPC. Advisory services offered through H.D. Vest Advisory Services<sup>SM</sup>. Non-bank subsidiaries of Wells Fargo & Company.