

DISCOVER QUAKERTOWN

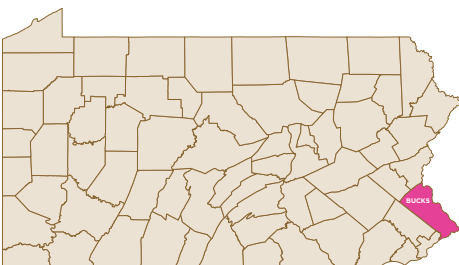
RICH IN HISTORY,
ENGAGED
IN OUR FUTURE



From its initial settlement days as the “Great Swamp” in the early eighteenth century, to its current status as a thriving commercial hub in Upper Bucks County, Quakertown has drawn on the progressive spirit of its residents, business owners and leaders to create an outstanding environment for business to thrive and families to live, work and play.

KEY ASSETS WITHIN THE BOROUGH OF QUAKERTOWN AND IMMEDIATE SURROUNDING COMMUNITIES

SHOPPING	<ul style="list-style-type: none"> —Broad Street boutique merchants including Sines 5&10 —An antique district —Big box shopping on Route 309
DINING	<ul style="list-style-type: none"> —A number of small, privately owned family restaurants, diners and bars – some BYOB, some with outdoor dining —A variety of chain restaurants on the Route 309 corridor
CULTURE	<ul style="list-style-type: none"> —A national historic district, Quakertown boasts a rich history, with many historic structures and homes, including Liberty Hall where the Liberty Bell was kept on route to Allentown during the Revolutionary war —An arts and events center where live theatre and performance acts are staged —An area rich in the visual arts with world renowned artists such as Steve Tobin and Joanne Isaacs with local studios —Annual arts festival sponsored by QuakertownAlive!, the borough’s Main Street Program
RECREATION	<ul style="list-style-type: none"> —An extensive park system within the borough with a children’s playground, basketball courts, an ice skating pond, walking and bike trails, a community pool, and extensive baseball, football and soccer fields —A baseball stadium that is home to the Quakertown Blazers, part of the Atlantic Collegiate Baseball League —Proximity to several state parks, including Lake Nockamixon which offers boating, swimming, hunting and hiking



IT IS PROJECTED THAT APPROXIMATELY 215,000 PEOPLE WILL RESIDE WITHIN A 20-MINUTE DRIVE OF QUAKERTOWN BY THE YEAR 2013.

QUAKERTOWN

POPULATION TRENDS



QUAKERTOWN POPULATION AND ANNUAL GROWTH RATE

Population	5-minute	10-minute	15-minute	20-minute	Quakertown	Bucks Cty	PA	US
2000	15,612	33,834	85,675	185,903	8,978	597,635	12,281,054	281,421,906
2008	17,641	37,257	93,689	202,985	9,105	638,122	12,631,267	309,299,265
2013	18,829	39,418	98,998	214,874	9,241	662,225	12,836,126	328,770,749
2008-2013 Annual Rate	1.31%	1.13%	1.11%	1.14%	0.30%	0.74%	0.32%	1.23%

The population in each of the drive time rings has been increasing, and is projected to continue to increase through 2013.

QUAKERTOWN HOUSEHOLDS

Households	5-minute	10-minute	15-minute	20-minute	Quakertown	Bucks Cty	PA	US
2000	5,758	12,625	31,679	70,863	3,440	218,725	4,777,003	105,480,101
2008	6,546	14,045	35,055	78,199	3,497	235,837	4,973,714	116,384,754
2013	7,017	14,944	37,219	83,113	3,563	246,050	5,079,458	123,932,585
2008-2013 Annual Rate	1.40%	1.25%	2%	3%	0.37%	0.85%	0.42%	1.26%

Each market area will experience growth in the number of households. As with overall population, the 5-minute drive time will experience a higher annual rate of growth than all other areas (1.40%). The Quakertown Borough itself, will experience a slight increase in households from 2008-2013 (0.37%).

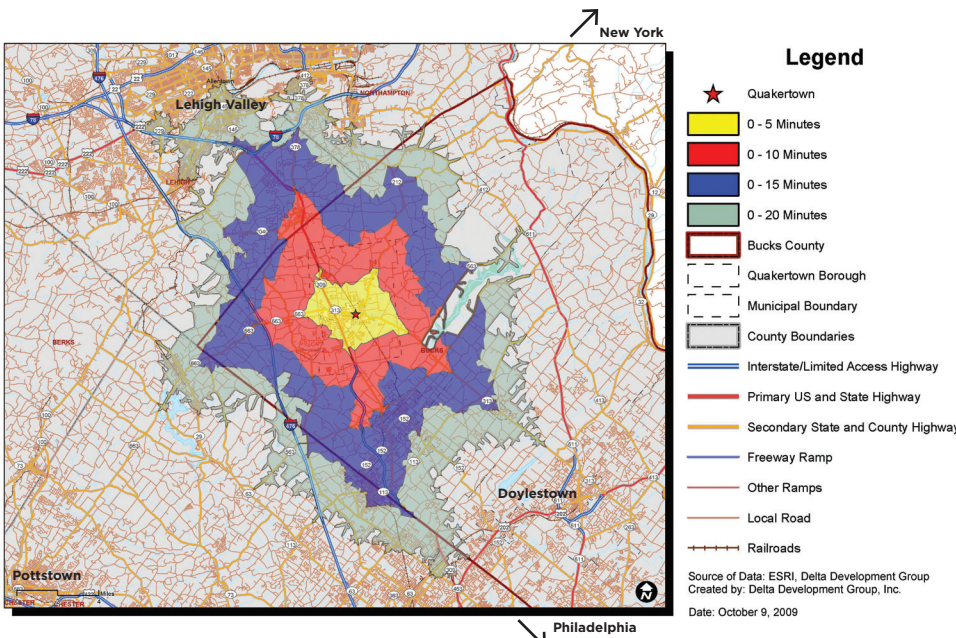
COMMUNITIES LOCATED WITHIN DRIVE TIMES*

5-minute	Quakertown, Richlandtown, Richland Township, Milford Township
10-minute	Spinnerstown, Richland Township, Milford Township, Perkasie, Sellersville, Coopersburg
15-minute	Pennsburg, East Greenville, Center Valley, Springfield Township, Telford, Soudertown, Hellertown
20-minute	Bethlehem, Allentown, Dublin, Hilltown, Pottstown, Boyertown, Montgomery Township

* All drive times are calculated from the intersection of 3rd and Broad Streets in Quakertown.

QUAKERTOWN IS IDEALLY SITUATED AT THE CROSSROADS OF MAJOR ACCESS ROUTES: PA 476, ROUTE 309, I-78, ROUTE 313.

This convenient location gives Quakertown easy access to Philadelphia, the Lehigh Valley and New York. Quakertown also is convenient to Pottstown and other points west in Montgomery County, and Doylestown and other locales in Central and Lower Bucks County.



QUAKERTOWN

EXPLORE THE POSSIBILITIES

Shopping | Dining | Culture | Recreation

Borough of Quakertown

35 N. Third Street

Quakertown, PA 18951

Phone: 215-536-5001

Fax: 215-538-9281

Email: manager@quakertownboro.com

www.quakertownboro.com

All population information on these tables comes from the US Bureau of Census, 2000 Census of Population and Housing, ESRI forecasts for 2008-2013 and *info USA*.